

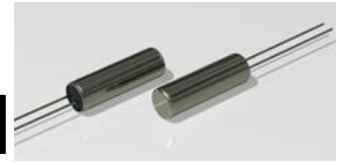
DT15系列/DT15 Series

CHDT15-32.768K112.5A2-NB

(料号参考下页选型指南)

Pb Free

RoHS Compliant
2002/95/EC



※ 应用及特点 Application & Features

- 实时时钟 Real time clock
- 测量仪器 Measuring instruments
- 通信时钟源, A/V 设备 Clock source communication or A/V equipment
- 金属封装尺寸: 2.0×6.0mm Metal Package

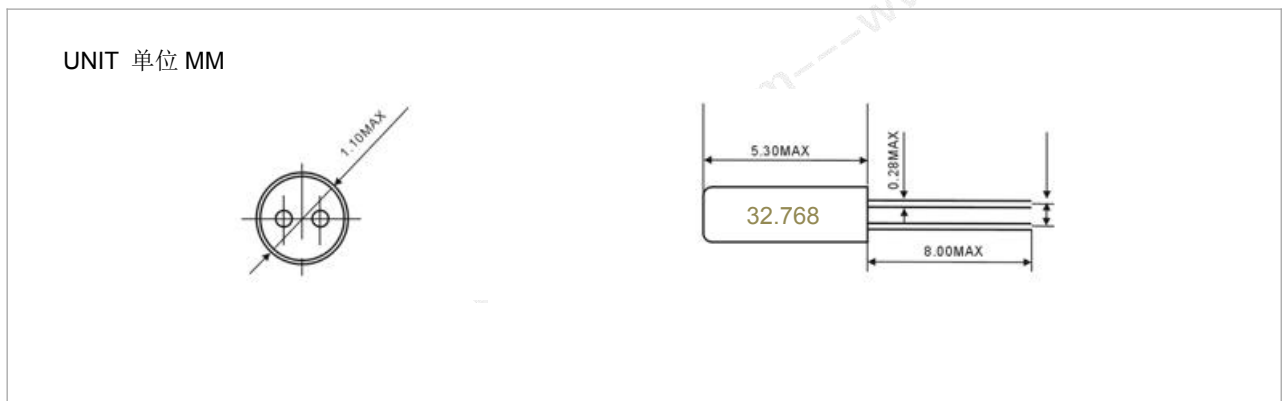
※ 电气参数 Electrical Specification

项目 Item	参数 Parameter
频率范围 Frequency Range	30.000 to 200.000KHz
调整频差 Frequency Tolerance) (ΔF)(at25℃)	± 10 to ± 50 ppm
温度系数 Parabolic curvature constant	-0.042 / ($\Delta ^\circ C$) Maximum
Q 值 Quality Factor	50000 Maximum
工作温度 Operating Temperature Range	-10 to +60 $^\circ C$
储存温度 Storage Temperature Range	-40 to +85 $^\circ C$
负载电容 Load Capacitance , (CL)	12.5PF or Suggested by customer
激励功率 Drive Level)	1 μW Maximum
静态电容 Shunt Capacitance ,(C0)	1.0pF Max
动态电容 Motional Capacitance ,(C1)	1~4fF typical
老化率 Aging (at 25 $^\circ C$)	± 3 ppm / year Max
绝缘阻抗 Insulation Resistance (Rs)	500M Ω Min at D.C 100V

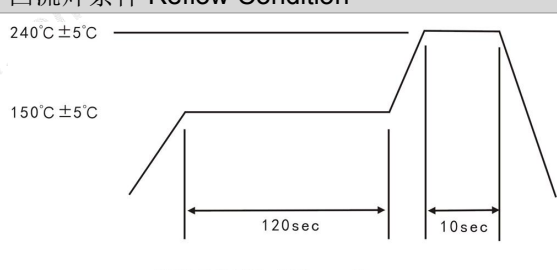
※ 等效电阻和振荡模式 Equivalent Series Resistance (ESR) and Mode of Oscillation

频率范围 Frequency Range (KHz)	等效阻抗 ESR(Ω)	振荡模式 Mode of Oscillation
30.000 - 40.000 KHz	40K Max	基频 AT Fund
40.000 - 60.000 KHz	30K Max	基频 AT Fund
60.000 - 70.000 KHz	25K Max	基频 AT Fund
70.000 - 100.000 KHz	22K Max	基频 AT Fund
100.000 - 200.000 KHz	20K Max	基频 AT Fund

※ 外形尺寸及印字 Mechanical Dimensions and Marking



※ 应用环境标准 Environmental /Mechanical SPEC

项目 Item	参数 Parameter	回流焊条件 Reflow Condition
耐冲击性 Shock Resistance	跌落测试:75cm 高度,跌落三次至硬木板 Drop from Height 75cm to hard wooded board 3 times	 <p>CYCLE TIME: 200sec Max.</p>
焊接条件 Solder Condition	引线焊接时,烙铁最高温度 240 度,焊接时间最长 10 秒 Lead wire should be soldered with 10S with the iron heated to a tip temperature 240°C (Max)	

※ 选型指南 Part Number Guide

CH		DT15		—		32.768K 1		12.5		A2		—		N		B		
CHXTAL																		包装方式 B: 散包 Bulk T: 编带 Tape
型号 Table1																		附加加工 N: 普通 Normal C: 切脚 Lead Cutting G: 弯脚 Gull Wing J: 套管 Jacket I: 绝缘垫片 Insulator
频率 Frequency Range																		温度特性 Table2
振荡模式 1: Fund 3: 3RD 5: 5thovertone																		
负载电容(PF) Load Capacitance																		

※ Table1 型号/Type

A	B	C							
DT15	DT26	DT38							

※ Table2 温度特性及频差/Frequency stability at Temperature Range

温度特性及频差 Frequency stability @Temperature Range						
	Temp (°C)	-10~60	-20~70	-40~85		
Stability (ppm)		A	B	C		
±10	1	*	*			
±20	2	*	*	*		
±30	3	*	*	*		